



ARKANSAS DEPARTMENT OF HEALTH

**José R. Romero, MD, FAAP, FIDSA, FPIDS, FAAAS,
Secretary of Health**

Outbreak Response/Epidemiology Influenza Weekly Report Arkansas 2020-2021

Week Ending Saturday 03/27/2021

Jennifer Dillaha, MD,
State Epidemiologist, Medical Director, Immunizations/Outbreak Response

Shirley Louie, MS, CIH
Deputy State Epidemiologist; Director, Center for Public Health Practice

Prepared by:

Haytham Safi, MD, MPH
Epidemiology Supervisor
Influenza Surveillance Coordinator
Haytham.Safi@Arkansas.gov
501-661-2920

Reviewed by:

Lori Simmons, MS, Branch Chief, Epidemiology
Kellye McCartney, Branch Chief, Immunizations/Outbreak Control
Mike Cima, PhD, Chief Epidemiologist, Associate Director for Science, CHP

During flu season, the Arkansas Department of Health (ADH) produces a Weekly Influenza Report for clinicians. The report provides information on flu activity in the state. The report also compares influenza-like-illness (ILI) in Arkansas to activity in the U.S. ADH receives reports of only a fraction of flu cases since it only requires reports of hospitalizations, deaths, and outbreaks. Therefore, it is important to understand that the information in the weekly update is representative of the timing and location of activity, but it does not reflect the overall burden of disease. It is presumed that there are many more people actually affected than the report shows. Clinicians and policy makers may find the report helpful in terms of communicating to colleagues and patients about the current status of the flu season.

Report Key Points:

- For Week 12, Arkansas reported “Minimal” or 1 out of 13 for Influenza-Like-Illness (ILI) activity level indicator determined by data reported to ILINet.
- Since September 27, 2020, 1,973 positive influenza tests have been reported to the ADH online database by health care providers. **Please note that reported cases reflect only a portion of the actual numbers of flu cases in the state.**
- Among flu antigen tests this season that can distinguish between influenza A and B virus types, 38 percent were influenza A, and 62 percent were influenza B.
- About 0.5 percent of patients visiting emergency rooms this week were there for ILI (Syndromic Surveillance). About 0.5 percent of outpatient visits were for ILI (ILINet sentinel providers).
- No school absenteeism report was provided this week due to public school spring break.
- Arkansas reported 18 influenza-related deaths this flu season.
- No nursing homes have reported influenza outbreaks this season.
- Nationally, the proportion of deaths reported to the National Center for Health Statistics attributed to pneumonia and influenza (P&I) is above the epidemic threshold this week.

You can report flu year-round and view the weekly influenza report during the influenza season at: <http://www.healthy.arkansas.gov/programs-services/topics/influenza>. You can also access the reporting website directly at: <https://FluReport.ADH.Arkansas.gov>.

For Additional National and International Influenza Surveillance Information:

World Health Organization (WHO): http://www.who.int/influenza/gisrs_laboratory/flunet/en/index.html.

CDC - Seasonal Influenza (Flu) - Weekly Report: <http://www.cdc.gov/flu/weekly/>

2020-2021 Influenza Outbreak Response/Epi Report (Week 12: 03/21/2021 – 03/27/2021)

Death Report for Week 12

- Deaths from all causes: 701
- Deaths due to Pneumonia: 56
- PCR confirmed Flu Deaths: 0
- Death Certificate or Flu Antigen only: 0

Cumulative Flu Deaths since 09/27/2020

- PCR confirmed Flu deaths: 1
- Death Certificate or Antigen only: 17
- Cumulative Flu deaths: 18

Total Flu-Related Hospital Admissions

- **PCR Confirmed:**
 - Cumulative: 12
 - Week ending 03/27/2021: 0
- **Antigen Positive:**
 - Cumulative: 191
 - Week ending 03/27/2021: 8

Weekly Arkansas ILI Intensity Level Reported by Sentinel Providers



PCR Lab Confirmed Influenza Cases

- Total Cases since 09/27/2020: 69
- Week ending 03/27/2021: 0

Reported cases reflect only a portion of the actual numbers of flu cases in the state.

PCR Tests	Week 12	Cumulative Cases Since 09/27/2020
A+	0	24
B+	0	38
Both A and B	0	7
B/Victoria	0	0
B/ Yamagata	0	0
H1N1+	0	0
H3+	0	0
Unsubtypeable	0	0
Total	0	69
Negative	–	–

PCR Confirmed Influenza Cases since 09/27/2020

Age Groups	PCR+	Hospitalized	Deaths
0-4 yr.	15	0	0
5-17 yr.	10	0	0
18-24 yr.	3	0	0
25-44 yr.	9	0	0
45-64 yr.	16	2	0
>= 65 yr.	16	10	1
Unknown	0	0	0
Total	69	12	1

School Absenteeism*

Week Ending: 01/30/2021

– Percent Absent: No Report- Spring break

– Previous Week: 8.1

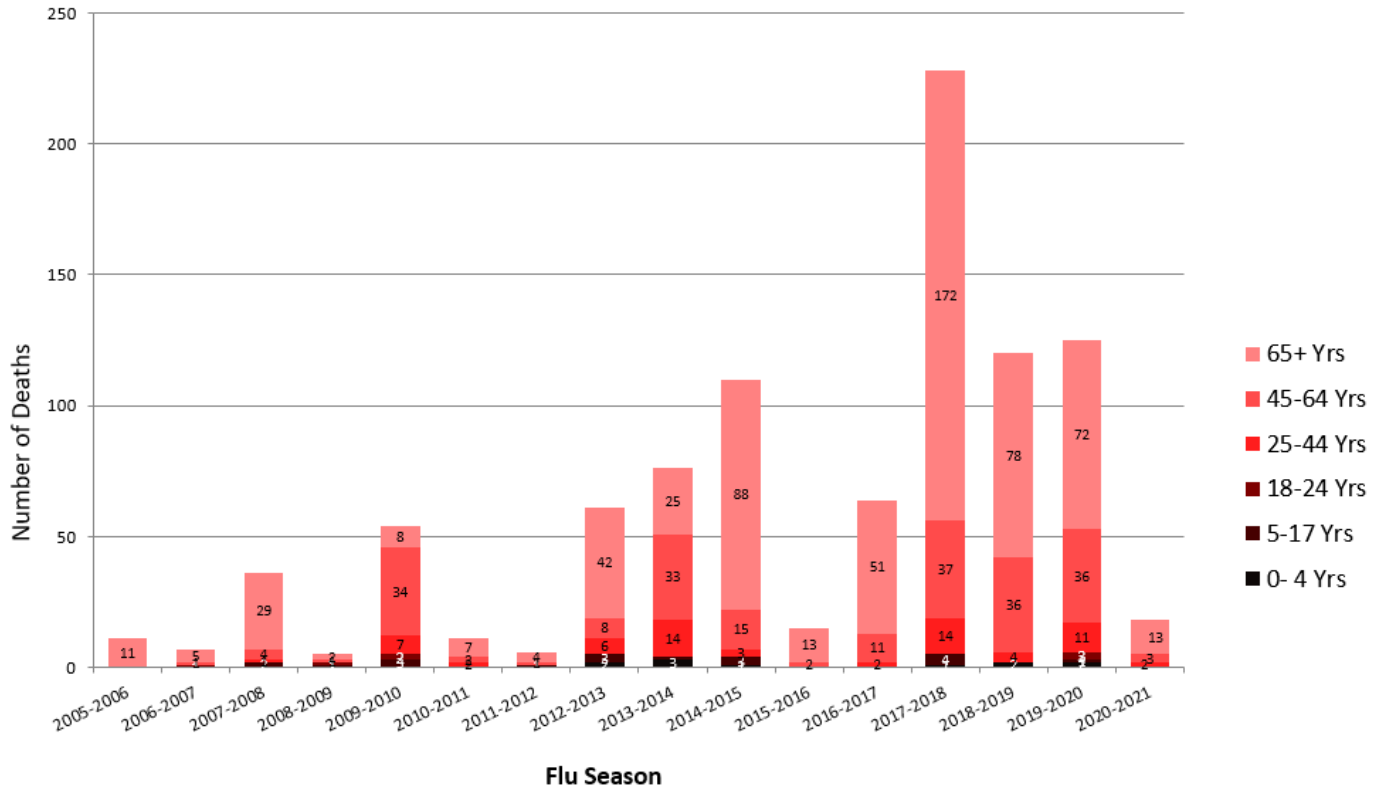
* Average daily absenteeism for all public schools during this reporting week.

ER Visits (Syndromic Surveillance)

- **Week Ending: 03/27/2021**
Weighted Average: 0.54%
 - Total Visits: 16,492
 - Visits with ILI: 89
- **Previous Week**
Weighted Average: 0.69%
 - Total Visits: 16,505
 - Visits with ILI: 114

Influenza Mortality by Age Group, Arkansas 2005-2021 (Provisional)

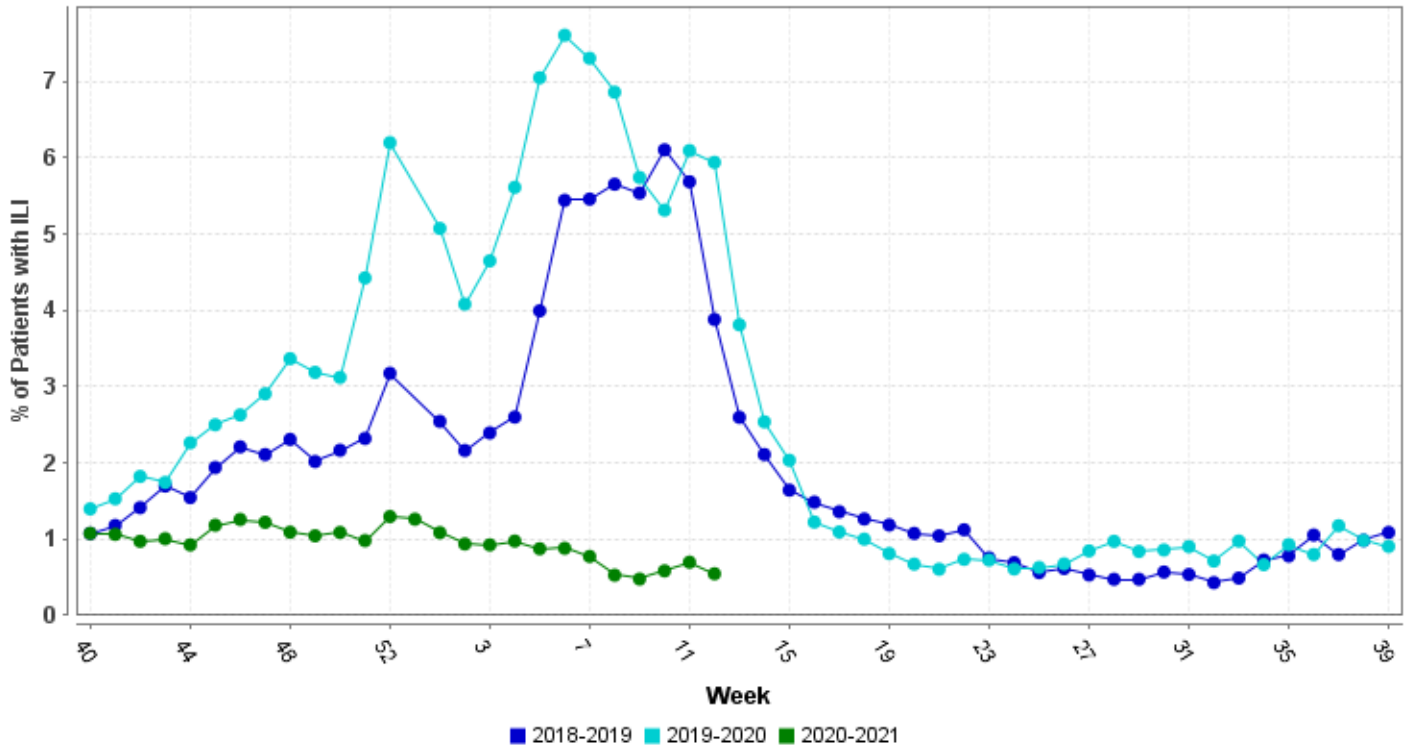
Report Updated: 03/30/2021



* All seasons range from week 40 to week 39 except 2009-2010 started week 36
 Source: ADH Outbreak Response Section, and Center for Health Statistics

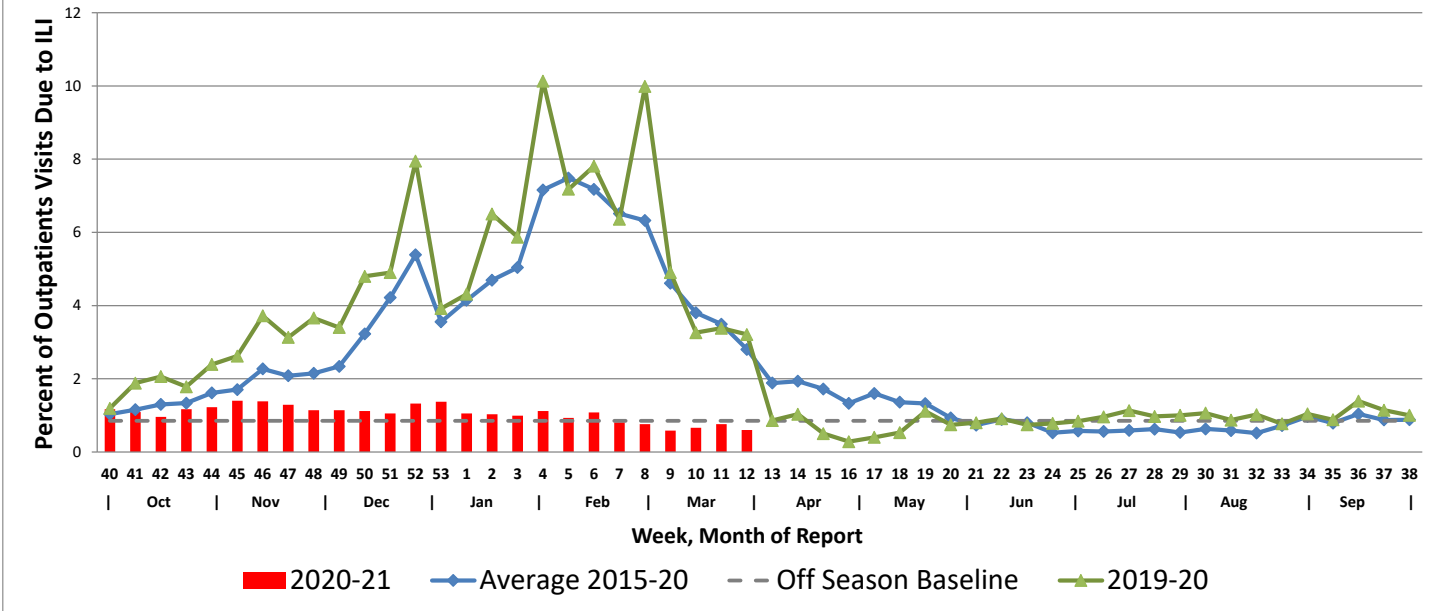
Hospital Report – Downloaded from ESSENCE (Syndromic Surveillance)

Percent ER Visits with ILI

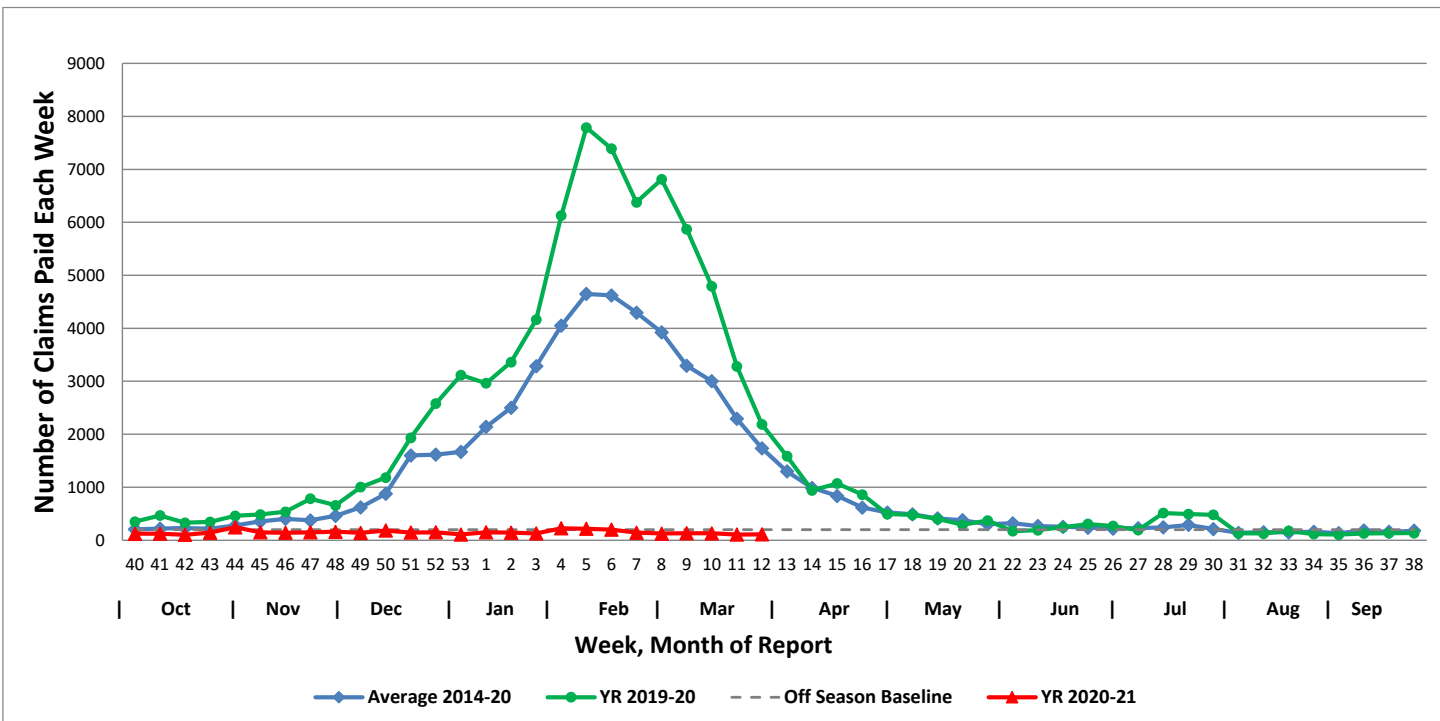


Arkansas Subset of US Outpatients Influenza Surveillance (ILINET)

Percentage of Outpatient Visits Due to Influenza-like Illness Reported by ILINet in Arkansas

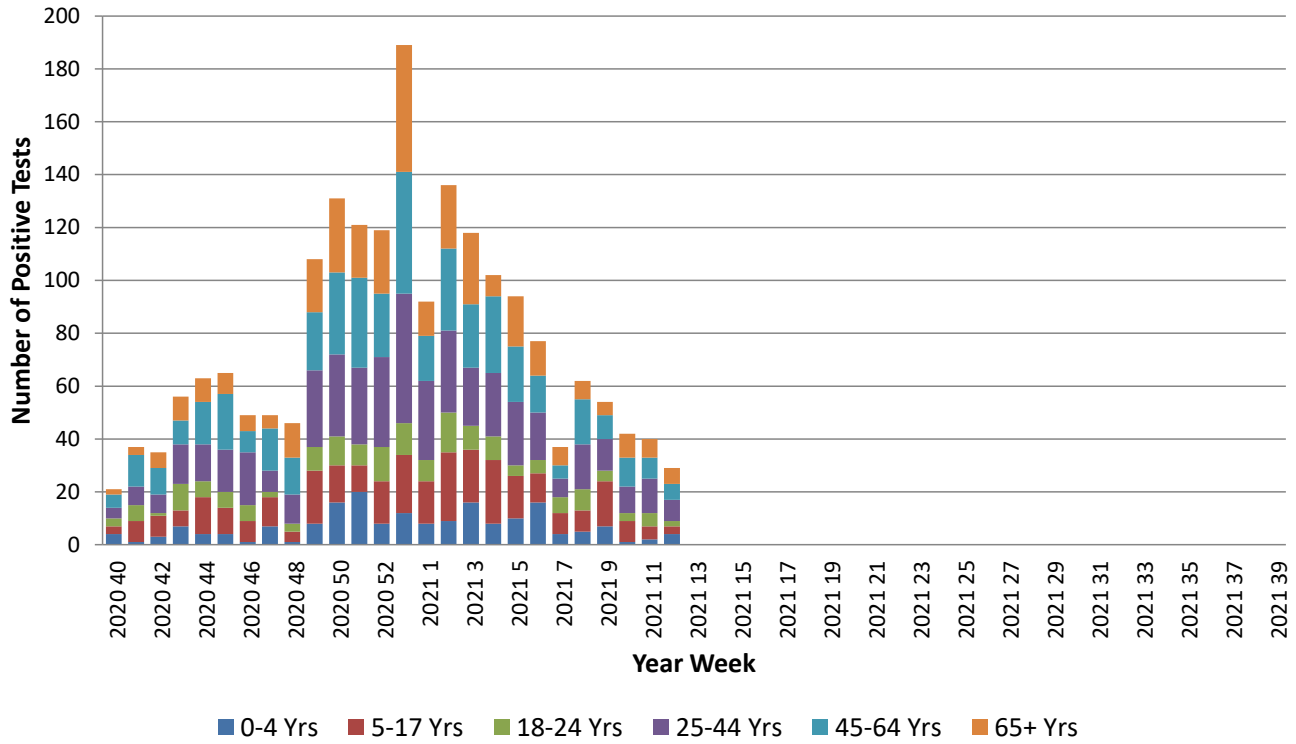


Weekly Influenza Claims Paid by Medicaid and BCBS of Arkansas

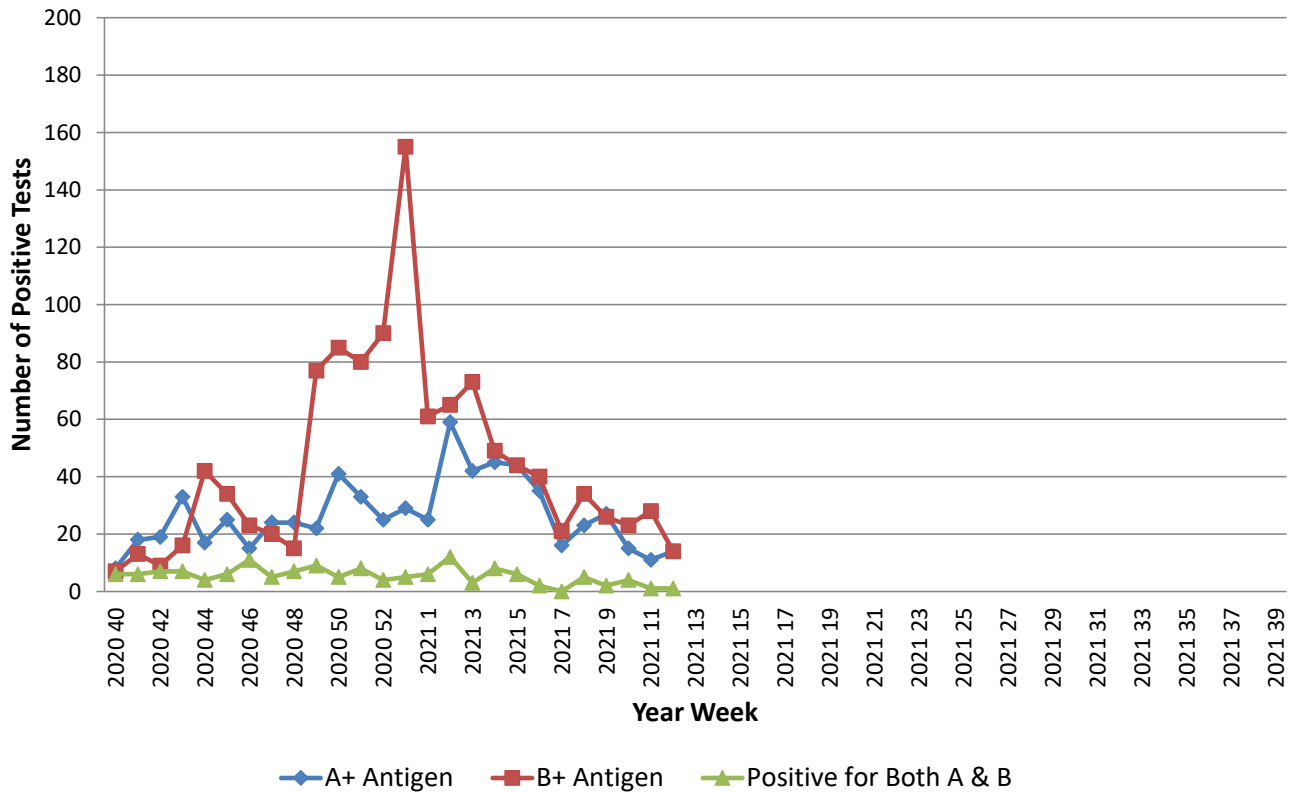


Antigen Report

Reported Influenza Positive Antigens by Age Group, Arkansas 2020-21

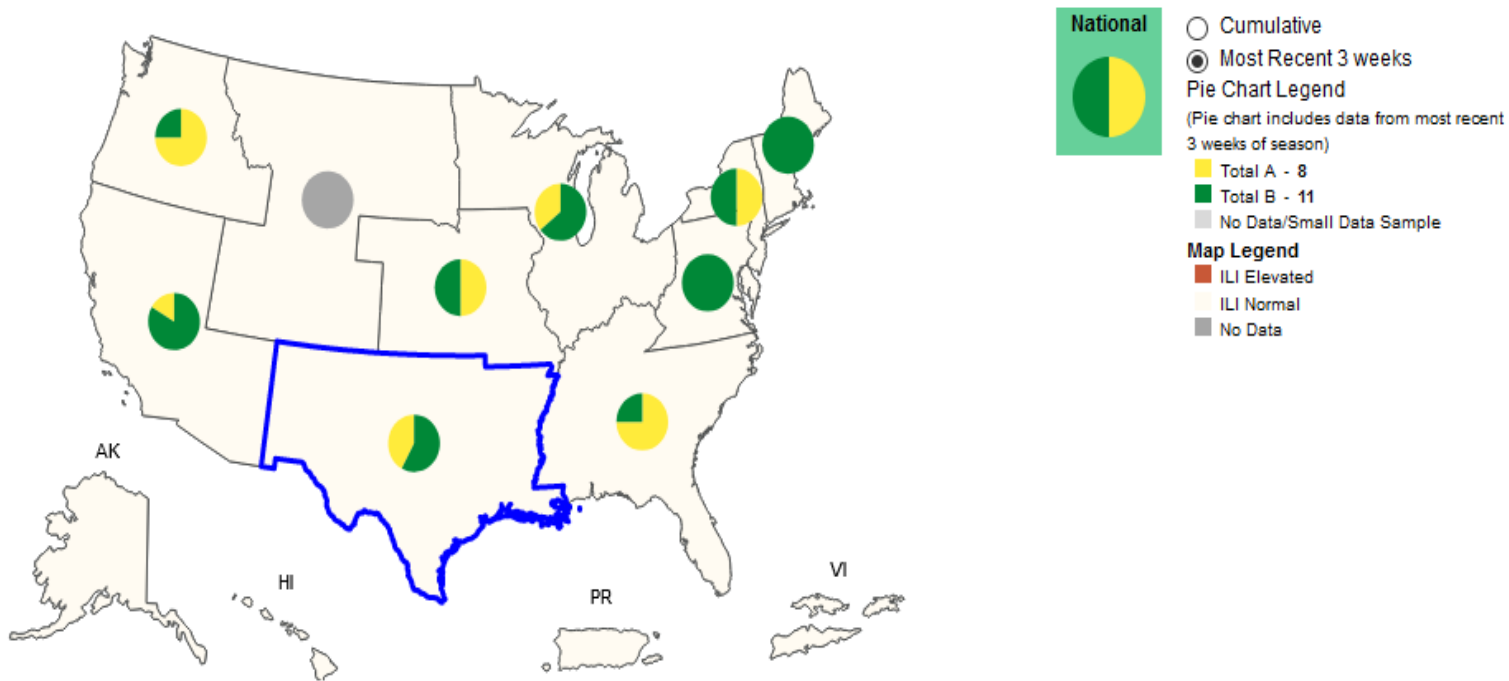


Reported Influenza Positive Antigens by Type, Arkansas 2020-21

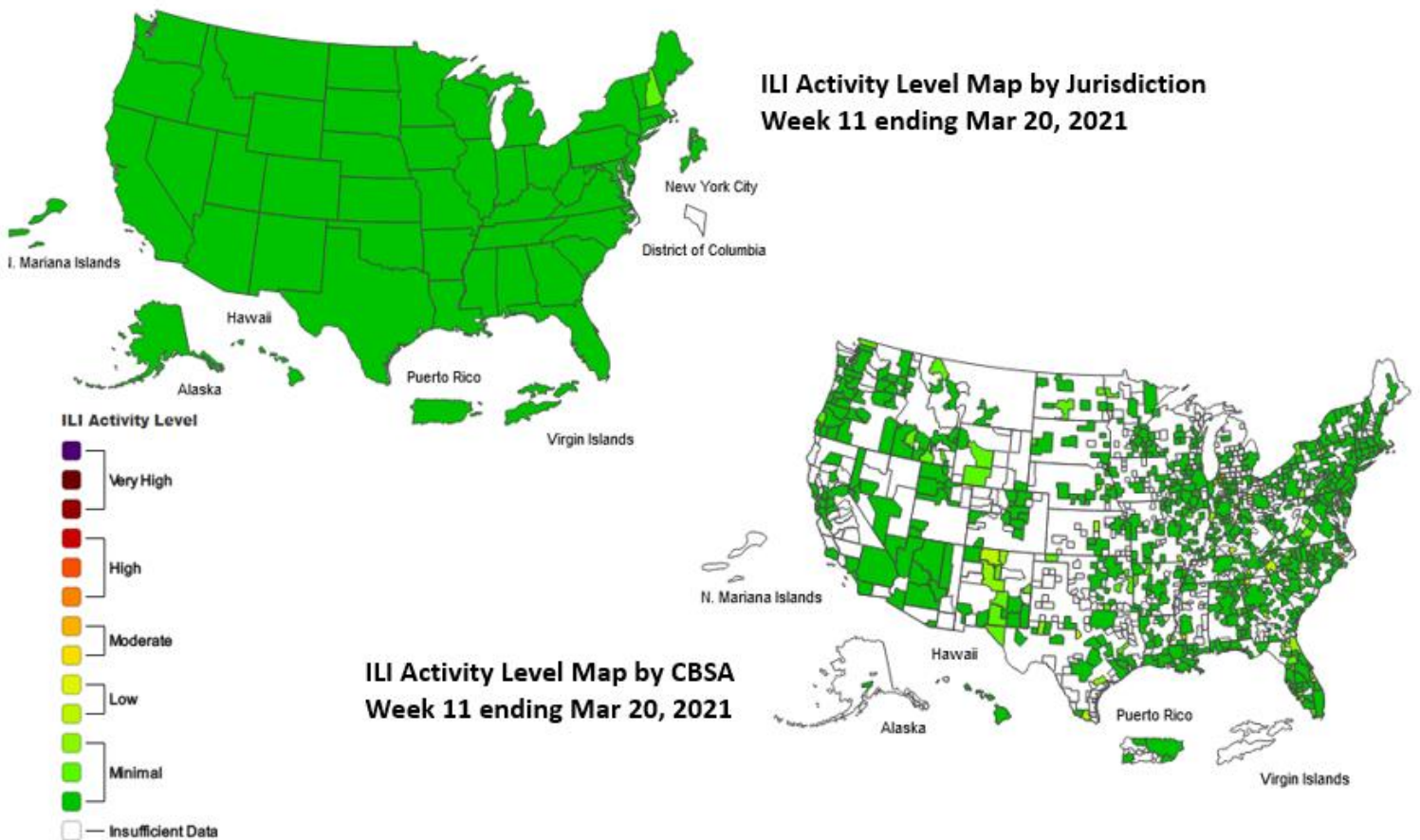


Influenza Positive Tests Reported to CDC and ILI Activity, by HHS Region Clinical Labs, 2020-2021 Season, Week Ending March 20, 2021

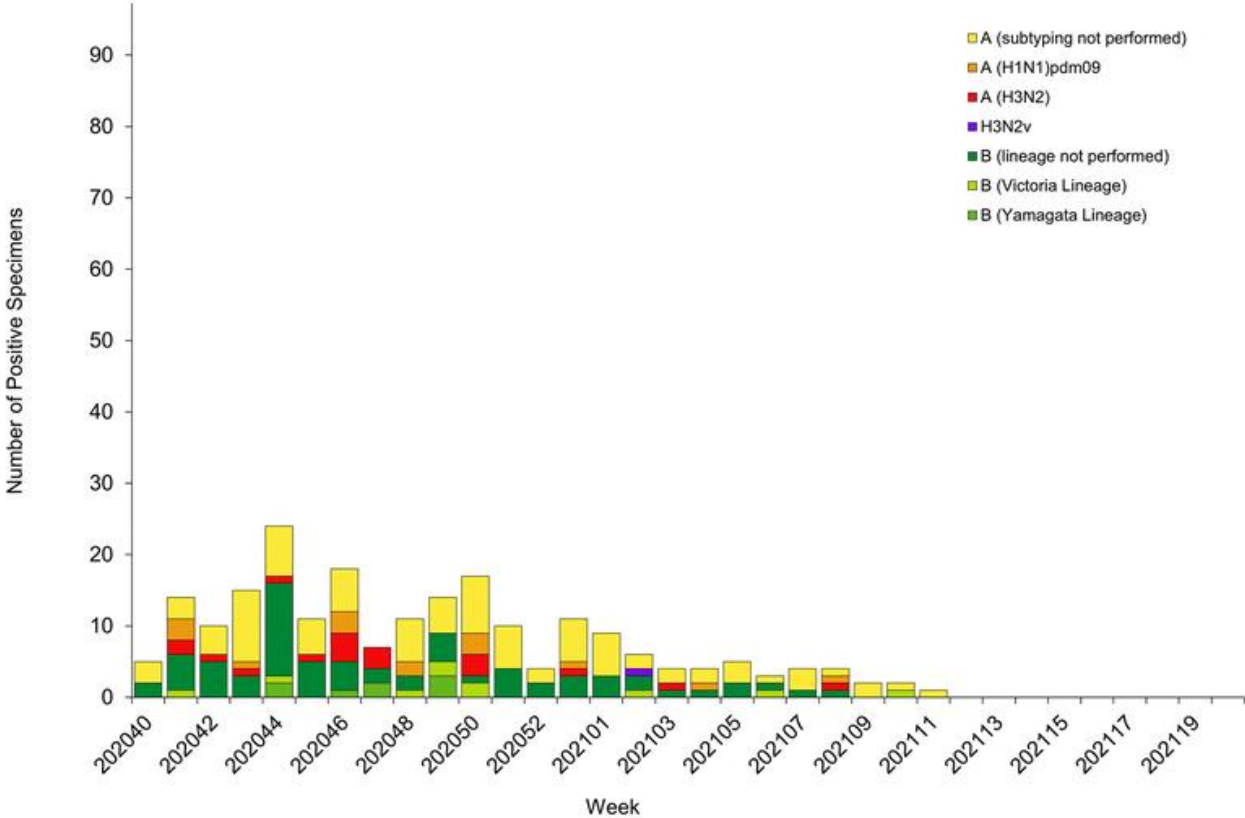
Values in legend are for the highlighted HHS region (Region 6)



Influenza-Like-Illness Activity Level Indicator Determined by Data Reported to ILINet



Influenza Positive Tests Reported to CDC by U.S. Public Health Laboratories, National Summary, September 27, 2020 – March 20, 2021



Pneumonia, Influenza and COVID Mortality from the National Center for Health Statistics Mortality Surveillance System Data through the week ending March 20, 2021, as of March 25, 2021

