

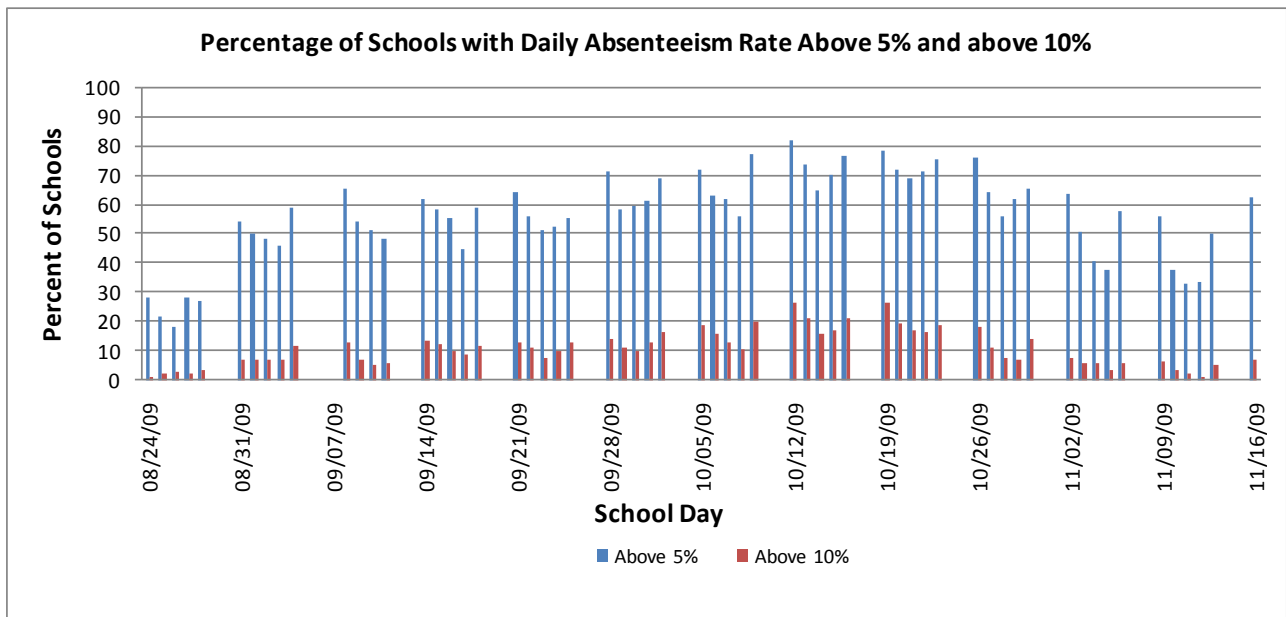
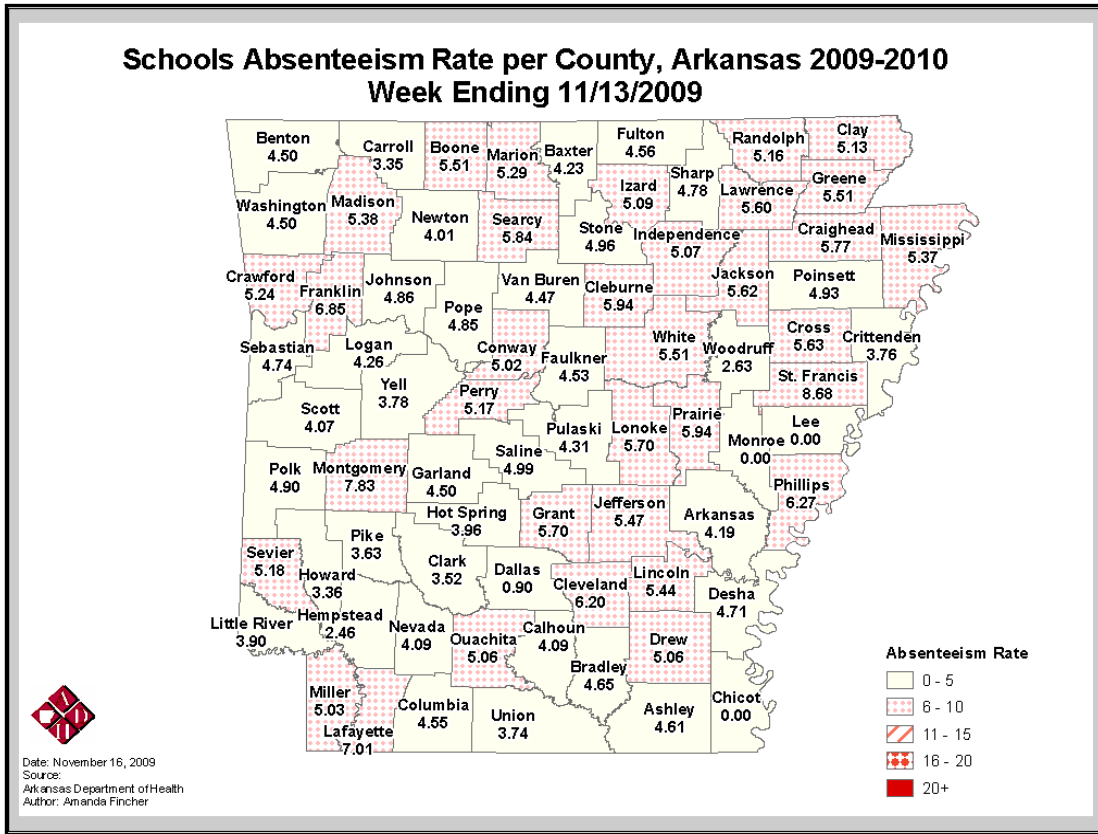


Paul K. Halverson, DrPH, FACHE, Director and State Health Officer

**Arkansas 2009-2010 Pandemic Influenza
Communicable Diseases/Epidemiology
Weekly Report**

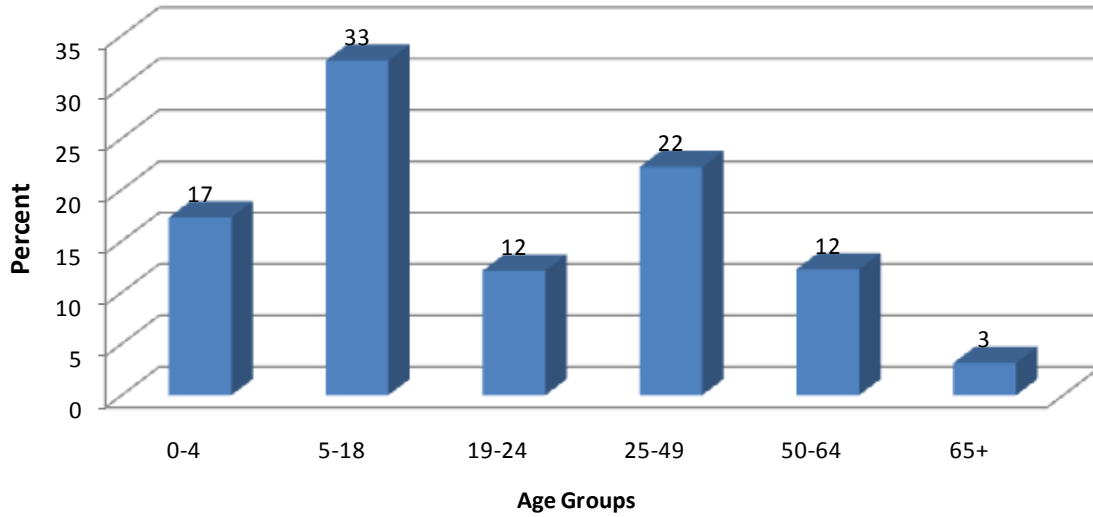
Monday 11/16/2009

Schools Absenteeism:

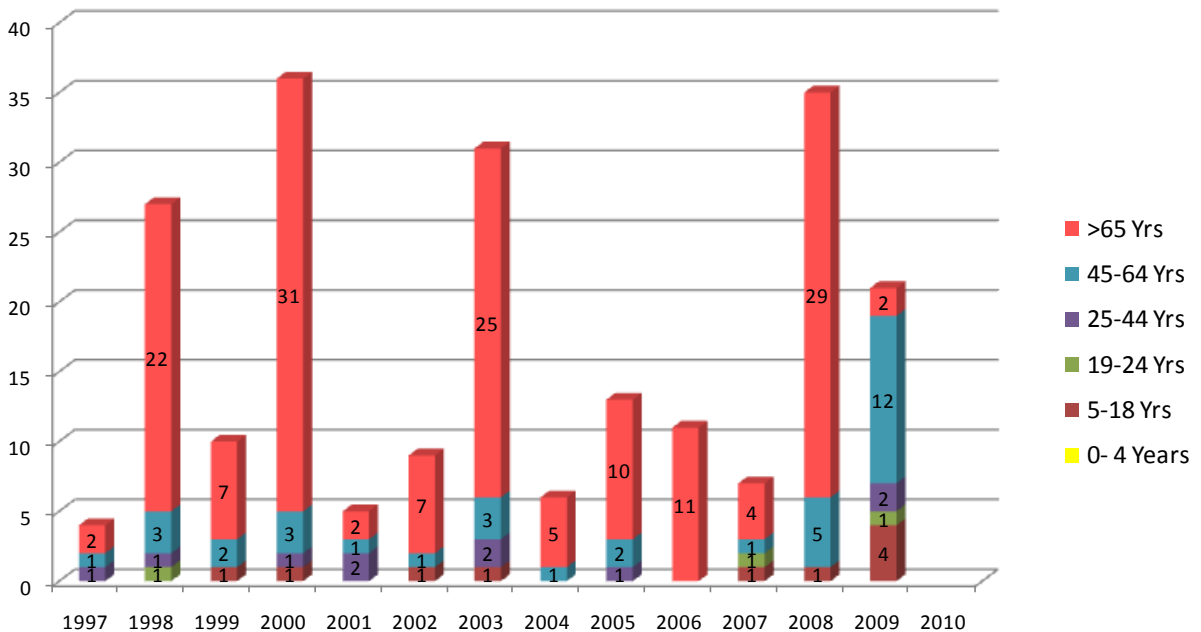


Lab confirmed 2009-2010 H1N1 cases in Arkansas:

Percentage of PCR Positive 2009 H1N1 Cases by age Groups, Arkansas 2009-10

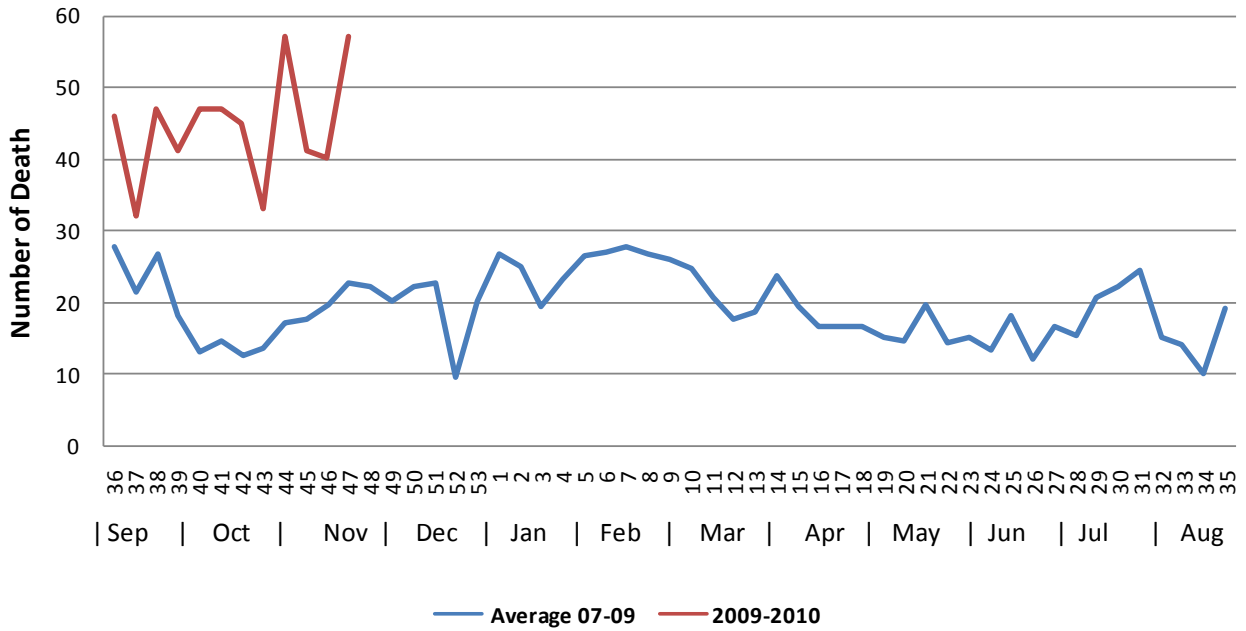


Arkansas Influenza Death by age groups 1997-2009
Report Updated: 11/16/2009 (Provisional)

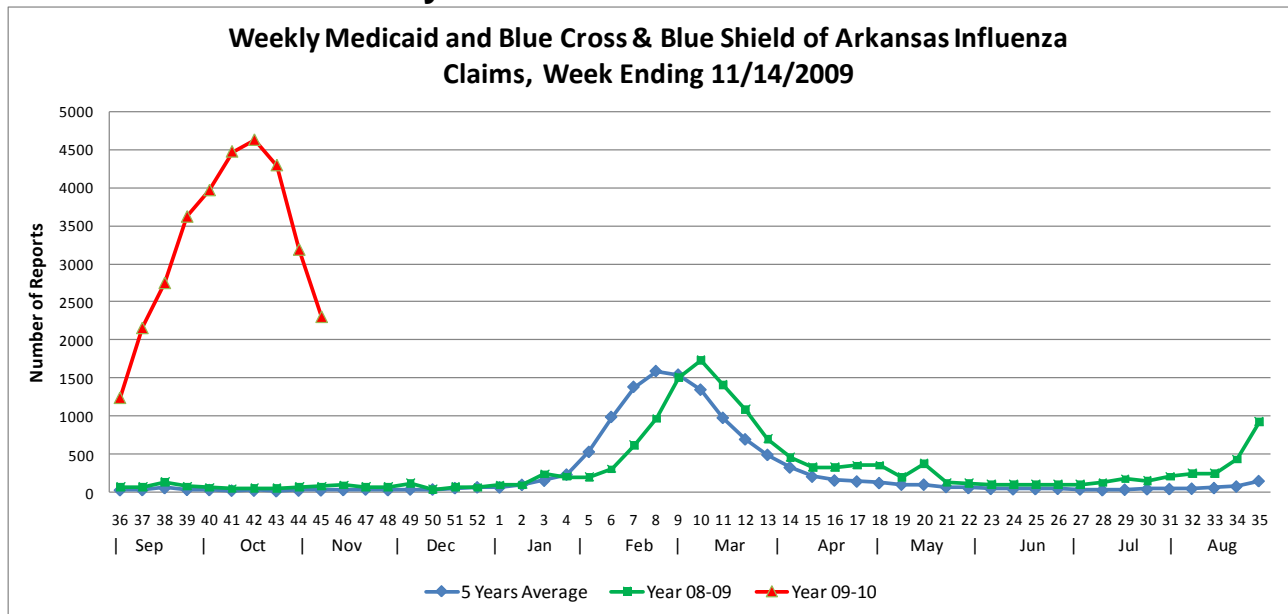


1997 1998 1999 2000 2001 2002 2003 2004 2005 2006 2007 2008 2009 2010
 **Flu was the main cause of Death in all cases
 only 2 patients died of seasonal flu in 2009
 Source: ADH Immunization section, center for health statistics

Weekly Pneumonia Death, 3 Years Summary, Arkansas



Influenza Claims Paid by Medicaid and BCBS:

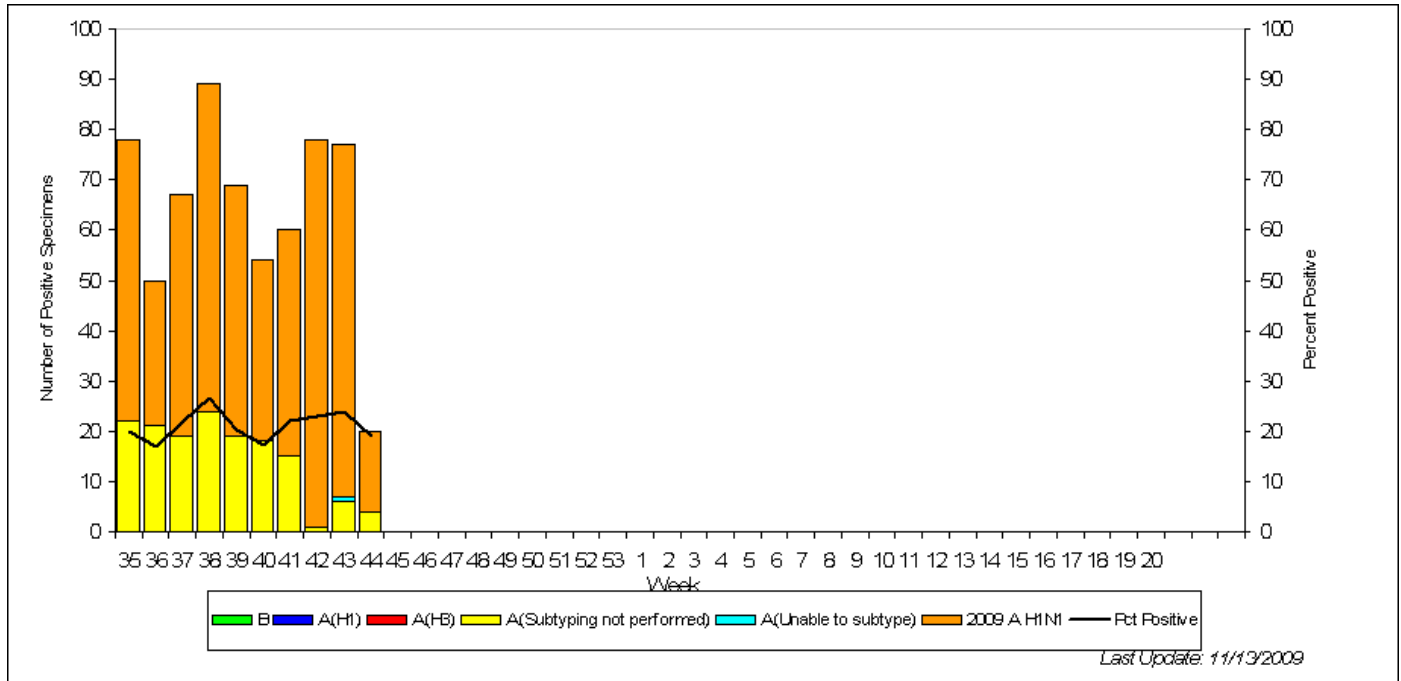


Percent of Visits for Influenza-Like-Illness reported by US Outpatients Influenza-Like-Illness Surveillance Network (ILINet) in the State of Arkansas



Note: The weekly percentage is based on an average of 593 patient visits per week.

WHO Isolates From Arkansas Reported by WHO/NREVSS Collaborating Laboratories, 2009-2010 Season



Last Update: 11/13/2009

Influenza Positive Tests Reported to CDC by U.S. WHO/NREVSS Collaborating Laboratories, National Summary, August 30-November 14, 2009

