

Section of Emergency Medical Services and Trauma Systems

2008 Computer Based Test Results

EMT-Basic/Ambulance

EMT-Intermediate

EMT-Paramedic

Table of Contents

Review of 2008 Test Results.....	2
Recruitment and Retention of EMSP.....	2
2008 Arkansas Exam Results.....	3
EMT-Basic/Ambulance Exam Results.....	3
EMT-Intermediate Exam Results.....	4
EMT-Paramedic Exam Results.....	4
Arkansas Training Site Codes.....	5
2008 Arkansas Cumulative Exam Results.....	6
2008 Arkansas Basic Training Sites.....	6
2008 Arkansas Intermediate Exam Results.....	11
2008 Arkansas Paramedic Exam Results.....	12
2008 Arkansas and National Comparative Report.....	14
2008 Pass Results: Arkansas and National Registry.....	14
EMT-Basic: Arkansas and National Comparative Report.....	15
EMT-Intermediate: Arkansas and National Comparative Report.....	17
EMT-Paramedic: Arkansas and National Comparative Report.....	19

**Arkansas Department of Health
Section of EMS and Trauma Systems
2008 Review of Computer Based Test Results**

The Section of Emergency Medical Services and Trauma Systems (Section) has completed a review of cognitive test scores for Emergency Medical services Personnel in Arkansas, testing during the calendar year 2008. The Section hopes that the following information will assist the Emergency Medical Services Training Committee and the EMS Advisory Council as they compile recommendations to ensure that Arkansas provides adequate education for prospective EMSP.

The National Registry of Emergency Medical Technicians (NREMT) implemented computer based testing on January 1, 2007 to provide a valid and reliable exam process. Some of the benefits includes rapid turn-around of test results, choices on when and where to take the exam, easier registration, and increased exam security. One disadvantage is revealed in the current test scores. Some candidates who were already in the testing process prior to the implementation of computer based testing are now counted as a first time test attempt when they take the first computer test. This will affect the data in this report for the year of 2008.

Recruitment and Retention of EMTs

Recruitment and retention of EMSP is a concern expressed by all parties involved in Emergency Medical Services (EMS). EMS is experiencing a personnel shortage that will eventually have an impact on communities across the state. A workforce assessment was conducted to identify areas of need; to view this assessment go to the Arkansas Department of Health’s website at www.healthyarkansas.com/ems.

EMT Level	2003*	2004*	2005*	2006*	2007*	2008
Basic/Ambulance	3811	4004	3959	4175	4219	4249
Intermediate 85	132	162	160	167	161	159
Paramedic	1365	1374	1419	1554	1539	1577
Total EMTs	5308	5540	5538	5896	5919	5986

**Data obtained during the month of April*

This report was compiled by the Section during May 2009, using information obtained from the NREMT website. Individual Training Sites can obtain their individual reports from the NREMT website at www.nremt.org.

2008 Arkansas Exam Results

The following data acquired from the National Registry of Emergency Medical Technicians website (www.nremt.org) consists of results compiled from candidates that completed their programs and tested from January 1, 2008 thru December 31, 2008. Refer to page 5 for all Arkansas Training Site Codes.

EMT-Basic/Ambulance Exam Results

Training Site	All Attempts	Pass	Fail	% Pass	Pass by 3 rd	Pass by 6 th	Still eligible	
					Pass 1st Attempt	Attempt		Attempt
AR-053	12	8	4	66%	7	8	8	4
AR-101	77	65	12	84%	61	65	65	12
AR-020	4	3	1	75%	3	3	3	1
AR-032	15	9	6	60%	8	9	9	6
AR-028	4	3	1	75%	2	3	3	1
AR-014	3	3	0	100%	3	3	3	0
AR-031	21	15	6	71%	13	15	15	6
AR-103	0	0	0	0%	0	0	0	0
AR-104	44	37	7	84%	30	37	37	7
AR-002	5	3	2	60%	3	3	3	2
AR-106	0	0	0	0%	0	0	0	0
AR-107	7	7	0	100%	7	7	7	0
AR-202	0	0	0	0%	0	0	0	0
AR-109	5	0	5	0%	0	0	0	5
AR-013	9	7	2	78%	7	7	7	2
AR-016	11	7	4	64%	7	7	7	4
AR-012	53	51	2	96%	49	51	51	2
AR-203	10	4	6	40%	4	4	4	6
AR-111	0	0	0	0%	0	0	0	0
AR-115	13	9	4	69%	8	9	9	4
AR-019	33	16	17	48%	15	16	16	17
AR-030	12	8	4	67%	7	8	8	4
AR-017	13	9	4	69%	9	9	9	4
AR-105	2	2	0	100%	1	2	2	0
AR-114	16	7	9	44%	5	7	7	9
AR-004	28	23	5	82%	21	22	23	5
AR-029	6	2	4	33%	2	2	2	4
AR-022	7	5	2	71%	4	5	5	2
AR-054	24	13	11	54%	13	13	13	11
AR-052	5	2	3	40%	0	2	2	3
AR-113	7	7	0	100%	4	7	7	0
Total	446	325	121	70%	293	324	325	121

EMT-Intermediate Exam Results

Training Site	All Attempts	Pass	Fail	% Pass	Pass 1st Attempt	Pass by 3 rd Attempt	Pass by 6 th Attempt	Still eligible
					0	0	0	
AR-028	1	0	1	0%	0	0	0	1
AR 203	0							
AR-115	4	3	1	75%	3	3	3	1
AR-019	8	6	2	75%	5	6	6	2
AR-017	2	2	0	100%	2	2	2	0

EMT-Paramedic Exam Results

Training Site	All Attempt	Pass	Fail	% Pass	Pass 1st Attempt	Pass by 3 rd Attempt	Pass by 6 th Attempt	Still eligible
					N/A			
AR-053	6	2	4	33%	2	2	2	4
AR-020	0			N/A	N/A			
AR-032	6	2	4	33%	1	2	2	4
AR-028	12	8	4	67%	6	8	8	4
AR-031	6	1	5	17%	1	1	1	4
AR-002	4	2	2	50%	2	2	2	2
AR-013	6	3	3	50%	3	3	3	3
AR-016	4	2	2	50%	2	2	2	2
AR-012	11	11	11	100%	11	11	11	0
AR-019	12	9	3	75%	8	9	9	3
AR-030	7	3	4	43%	2	3	3	4
AR-004	20	19	1	95%	18	19	19	1
AR-029	2	2	0	100%	2	2	2	0
AR-022	5	3	2	60%	3	3	3	2
AR-052	7	4	3	57%	2	4	4	3

Arkansas Training Site Codes

Training Site Name	Training Site Code
Arkansas State University Technical Center-Jonesboro	AR-053
Arkansas Fire Academy	AR-101
Arkansas Northeastern College	AR-020
Arkansas State University- Bebee	AR-032
Arkansas Tech University - Ozark Campus	AR-028
Baxter Regional Medical Center	AR-014
Black River Technical College	AR-031
Cossatot- Dequeen	AR-103
Crowleys Ridge Technical Institute	AR-104
East Arkansas Community College	AR-002
Henderson State	AR-106
Little Rock Fire Department	AR-107
Magnolia Hosp	AR-202
Mid-South Community College	AR-109
National Park Community College	AR-013
North Arkansas College	AR-016
Northwest Arkansas Community College	AR-012
Ouachita County Medical Center	AR-203
Ozarka Melbourne	AR-111
Rich Mountain Community College	AR-115
South Arkansas Community College	AR-019
Southeast Arkansas College	AR-030
Texarkana College	AR-017
UAM College of Technology - Crossett	AR-105
University of Arkansas-Morrilton	AR-114
University of Arkansas - Medical Science	AR-004
University of Arkansas at Monticello	AR-029
University of Arkansas Community College-Batesville	AR-022
University of Arkansas Fort Smith	AR-054
University of Arkansas Hope	AR-052
Saline Memorial Hospital	AR-113

2008 Arkansas Cumulative Exam Results

The following data compiled from NREMT website consists of candidates that have been in the testing process from 2006 thru 2008. Candidates that have completed their training process have two years from the date they complete their course to become certified. Some areas within the shaded area show no data available. The examination is an adaptive exam, training sites must have at least 10 candidates tested in order for a report to be generated, therefore no data is available.

Basic Training Site:	All Attempts						Air 1st	Card. 1st	Tra 1st	Med 1st	OB/Peds 1st	Ops 1st
AR-053	Air	Card.	Trauma	Medical	OB/Peds	Ops	69%	31%	31%	46%	38%	46%
Abv Passing	61%	22%	28%	44%	28%	50%	69%	31%	31%	46%	38%	46%
Near Passing	0%	39%	28%	39%	28%	11%	0%	46%	31%	38%	15%	15%
Below Passing	39%	39%	44%	17%	44%	39%	31%	23%	38%	15%	46%	38%
AR-101												
Abv Passing	49%	53%	61%	63%	61%	70%	57%	57%	63%	68%	65%	73%
Near Passing	21%	19%	19%	14%	13%	16%	22%	19%	18%	14%	11%	15%
Below Passing	30%	28%	20%	23%	27%	14%	22%	24%	19%	18%	24%	11%
AR-020												
Abv Passing	36%	36%	16%	48%	40%	48%	41%	29%	18%	59%	35%	47%
Near Passing	36%	16%	24%	8%	12%	24%	35%	18%	18%	0%	6%	24%
Below Passing	28%	48%	60%	44%	48%	28%	24%	53%	65%	41%	59%	29%
AR-032												
Abv Passing	38%	41%	32%	44%	32%	47%	39%	48%	39%	48%	30%	57%
Near Passing	29%	12%	29%	26%	26%	15%	30%	4%	30%	30%	26%	13%
Below Passing	32%	47%	38%	29%	41%	38%	30%	48%	30%	22%	43%	30%
AR-028												
Abv Passing	52%	38%	52%	52%	38%	48%	59%	45%	59%	55%	45%	50%
Near Passing	10%	14%	10%	17%	21%	24%	5%	14%	5%	18%	9%	23%
Below Passing	38%	48%	38%	31%	41%	28%	36%	41%	36%	27%	45%	27%
AR-014												
Abv Passing	No Data						N/A					
Near Passing												
Below Passing												

Basic Training Site:

							Air 1st	Card. 1st	Tra 1st	Med 1st	OB/Peds 1st	Ops 1st
AR-031	Air	Card.	Trauma	Medical	OB/Peds	Ops						
Abv Passing	41%	53%	39%	53%	43%	47%	50%	58%	50%	47%	50%	53%
Near Passing	24%	14%	24%	16%	20%	20%	19%	14%	25%	14%	19%	19%
Below Passing	35%	33%	37%	31%	37%	33%	31%	28%	25%	39%	31%	28%
AR-103	No Data						N/A					
Abv Passing												
Near Passing												
Below Passing												
AR-103												
Abv Passing	59%	59%	55%	52%	69%	53%	61%	59%	57%	54%	65%	52%
Near Passing	19%	24%	16%	22%	10%	22%	17%	20%	17%	22%	13%	22%
Below Passing	22%	17%	29%	26%	21%	24%	22%	22%	26%	24%	22%	26%
AR-002	No Data						N/A					
Abv Passing												
Near Passing												
Below Passing												
AR-106	No Data						N/A					
Abv Passing												
Near Passing												
Below Passing												
AR-107	No Data						N/A					
Abv Passing												
Near Passing												
Below Passing												
AR-202	No Data						N/A					
Abv Passing												
Near Passing												
Below Passing												
AR-109							No data					
Abv Passing	31%	38%	23%	31%	23%	15%						
Near Passing	23%	15%	15%	8%	31%	8%						
Below Passing	46%	46%	62%	62%	46%	77%						

Basic Training Site:

	Air	Card.	Trauma	Medical	OB/Peds	Ops	Air 1st	Card. 1st	Tra 1st	Med 1st	OB/Peds 1st	Ops 1st
AR-013												
Abv Passing	38%	42%	46%	38%	46%	42%	32%	32%	42%	42%	47%	53%
Near Passing	17%	13%	17%	38%	21%	29%	21%	11%	16%	37%	21%	21%
Below Passing	46%	46%	38%	25%	33%	29%	47%	58%	42%	21%	32%	26%
AR-016												
Abv Passing	38%	43%	52%	67%	38%	43%	42%	42%	53%	68%	37%	37%
Near Passing	10%	14%	24%	0%	43%	29%	5%	11%	26%	0%	42%	32%
Below Passing	52%	43%	24%	33%	19%	29%	53%	47%	21%	32%	21%	32%
AR-012												
Abv Passing	76%	63%	73%	71%	59%	69%	55%	65%	73%	72%	59%	72%
Near Passing	17%	28%	19%	19%	23%	19%	18%	26%	20%	19%	22%	19%
Below Passing	8%	9%	8%	10%	18%	12%	8%	9%	7%	9%	19%	9%
AR-203												
Abv Passing	33%	33%	25%	25%	33%	33%	No data					
Near Passing	17%	8%	17%	33%	33%	8%						
Below Passing	50%	58%	58%	42%	33%	58%						
AR-111												
Abv Passing	No Data						No data					
Near Passing												
Below Passing												
AR-115												
Abv Passing	57%	50%	54%	43%	36%	39%	59%	64%	59%	41%	41%	45%
Near Passing	11%	14%	21%	25%	14%	18%	14%	9%	27%	27%	14%	23%
Below Passing	32%	36%	25%	32%	50%	43%	27%	27%	14%	32%	45%	32%
AR-019												
Abv Passing	25%	42%	33%	27%	38%	36%	32%	49%	34%	32%	44%	39%
Near Passing	20%	9%	16%	22%	20%	27%	24%	7%	17%	24%	17%	27%
Below Passing	55%	49%	51%	51%	42%	36%	44%	44%	49%	44%	39%	34%
AR-030												
Abv Passing	50%	18%	23%	36%	41%	45%	47%	18%	24%	29%	41%	47%
Near Passing	18%	36%	41%	18%	23%	14%	18%	41%	29%	18%	24%	6%
Below Passing	32%	45%	36%	45%	36%	41%	35%	41%	47%	53%	35%	47%

Basic Training Site:

	Air	Card.	Trauma	Medical	OB/Peds	Ops	Air 1st	Card. 1st	Tra 1st	Med 1st	OB/Peds 1st	Ops 1st
AR-017												
Abv Passing	53%	36%	31%	36%	31%	53%	69%	50%	35%	38%	31%	62%
Near Passing	17%	33%	28%	44%	22%	25%	12%	27%	31%	38%	27%	19%
Below Passing	31%	31%	42%	19%	47%	22%	19%	23%	35%	23%	42%	19%
AR-105												
Abv Passing	No data						No Data					
Near Passing												
Below Passing												
AR-114												
Abv Passing	33%	20%	23%	33%	33%	37%	39%	17%	22%	30%	30%	39%
Near Passing	13%	23%	33%	13%	13%	10%	9%	26%	26%	9%	13%	13%
Below Passing	53%	57%	43%	53%	53%	53%	52%	57%	52%	61%	57%	48%
AR-004												
Abv Passing	40%	60%	51%	51%	56%	60%	45%	70%	55%	55%	61%	73%
Near Passing	19%	12%	16%	21%	16%	16%	21%	6%	18%	21%	12%	12%
Below Passing	42%	28%	33%	28%	28%	23%	33%	24%	27%	24%	27%	15%
AR-029												
Abv Passing	29%	52%	24%	33%	43%	43%	35%	59%	29%	41%	53%	53%
Near Passing	38%	5%	29%	14%	14%	29%	47%	6%	29%	12%	18%	24%
Below Passing	33%	43%	48%	52%	43%	29%	18%	35%	41%	47%	29%	24%
AR-022												
Abv Passing	35%	43%	30%	52%	48%	39%	47%	53%	40%	53%	67%	47%
Near Passing	26%	13%	13%	26%	22%	35%	7%	13%	20%	33%	13%	33%
Below Passing	39%	43%	57%	22%	30%	26%	47%	33%	40%	13%	20%	20%
AR-054												
Abv Passing	48%	40%	32%	44%	32%	56%	46%	38%	29%	46%	33%	58%
Near Passing	28%	36%	20%	28%	32%	12%	29%	38%	21%	25%	33%	13%
Below Passing	24%	24%	48%	28%	36%	32%	25%	25%	50%	29%	33%	29%
AR-052												
Abv Passing	21%	18%	21%	36%	43%	32%	5%	14%	10%	29%	38%	29%
Near Passing	18%	29%	36%	18%	18%	21%	14%	24%	43%	19%	24%	24%
Below Passing	61%	54%	43%	46%	39%	46%	81%	62%	48%	52%	38%	48%

Basic Training Site:

AR-113	Air	Card.	Trauma	Medical	OB/Peds	Ops
Abv Passing	45%	27%	36%	45%	55%	55%
Near Passing	36%	27%	45%	36%	27%	36%
Below Passing	18%	45%	18%	18%	18%	9%

Air 1st No Data	Card. 1st	Tra 1st	Med 1st	OB/Peds 1st	Ops 1st

2008 Arkansas Intermediate/85 Exam Results

The following Intermediate Training Site Data does not show individual training site statistics due to the low number of candidates testing. Each training site must have at least 10 candidates in order to establish a report data base from NREMT. The total Intermediate attempts for the year 2008 includes those candidates that have been in the testing process since 2006. First attempts include some Intermediate candidates that may have tested a “paper & pencil” exam in 2006.

Total Attempts				First Attempts			
	37				30		
	Abv pass	Near pass	Bel. Pass		Abv pass	Near pass	Bel. Pass
Airway	32%	27%	41%	Airway	33%	23%	43%
Cardiology	41%	24%	35%	Cardiology	40%	27%	33%
Trauma	38%	32%	30%	Trauma	40%	37%	23%
Medical	41%	22%	38%	Medical	47%	23%	30%
OB/Peds	27%	49%	24%	OB/Peds	30%	53%	17%
EMS Ops	57%	27%	16%	EMS Ops	57%	30%	13%

2008 Arkansas Paramedic Exam Results

Advanced Training Site:	All Attempts							Air 1st	Card. 1st	Tra 1st	Med 1st	OB/Peds 1st	Ops 1st
AR-053	Air	Card.	Trauma	Medical	OB/Peds	Ops	No Data						
Above Passing	7%	40%	47%	33%	40%	27%							
Near Passing	7%	20%	13%	13%	33%	27%							
Below Passing	87%	40%	40%	53%	27%	47%							
AR-020													
Above Passing	10%	13%	20%	23%	23%	27%	0%	10%	0%	30%	10%	30%	
Near Passing	10%	23%	7%	27%	33%	30%	10%	20%	0%	20%	20%	30%	
Below Passing	80%	63%	73%	50%	43%	43%	90%	70%	100%	50%	70%	40%	
AR-032													
Above Passing	13%	19%	25%	38%	13%	31%	No Data						
Near Passing	19%	6%	19%	6%	13%	13%							
Below Passing	69%	75%	56%	56%	75%	56%							
AR-028													
Above Passing	27%	32%	27%	27%	27%	27%	38%	31%	31%	38%	46%	23%	
Near Passing	18%	23%	18%	23%	32%	45%	15%	31%	31%	31%	31%	54%	
Below Passing	55%	45%	55%	50%	41%	27%	46%	38%	38%	31%	23%	23%	
AR-031													
Above Passing	25%	20%	15%	5%	20%	40%	No Data						
Near Passing	10%	5%	40%	20%	35%	25%							
Below Passing	65%	75%	45%	75%	45%	35%							
AR-002													
Above Passing	36%	18%	45%	45%	27%	9%	No Data						
Near Passing	27%	27%	9%	9%	0%	55%							
Below Passing	36%	55%	45%	45%	73%	36%							
AR-013													
Above Passing	21%	21%	29%	7%	57%	29%	No Data						
Near Passing	21%	36%	21%	50%	7%	29%							
Below Passing	57%	43%	50%	43%	36%	43%							
AR-016													
Above Passing	36%	27%	27%	27%	27%	45%	No Data						
Near Passing	18%	18%	18%	27%	18%	18%							
Below Passing	45%	55%	55%	45%	55%	36%							
AR-012													
Above Passing	85%	62%	77%	46%	38%	54%	91%	73%	82%	45%	36%	55%	
Near Passing	15%	23%	23%	23%	23%	23%	9%	18%	18%	18%	27%	27%	
Below Passing	0%	15%	0%	31%	38%	23%	0%	9%	0%	36%	36%	18%	
AR-019													
Above Passing	39%	35%	48%	48%	39%	35%	31%	46%	62%	62%	46%	54%	
Near Passing	4%	35%	13%	9%	26%	35%	8%	23%	15%	0%	23%	31%	
Below Passing	57%	30%	39%	43%	35%	30%	62%	31%	23%	38%	31%	15%	

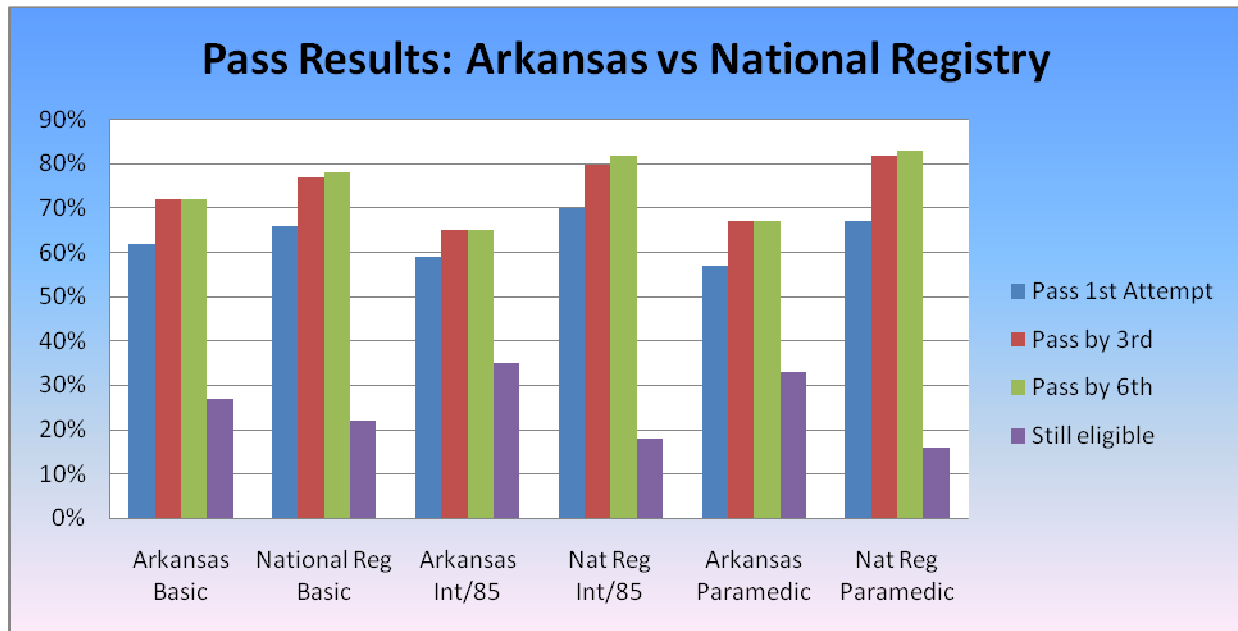
2008 Arkansas and National Comparative Report

The following graphs compare Arkansas and National Registry statistics based on data obtained from the NREMT website. The graphs depict percentages pertaining to the six topic areas candidates are required to test over.

2008 Pass Results: Arkansas vs National Registry

Arkansas vs National registry

	Pass 1 st attempt	Pass by 3 rd atmtpt	Pass by 6 th atmtpt	Still Eligible
Arkansas Basic	62%	72%	72%	27%
Nat Reg Basic	66%	77%	78%	22%
Ark Int/85	59%	65%	65%	35%
Nat Int 85	70%	80%	82%	18%
Ark Paramedic	57%	67%	67%	33%
Nat Reg Paramedic	67%	82%	83%	16%



EMT-Basic: Arkansas and National Comparative Report

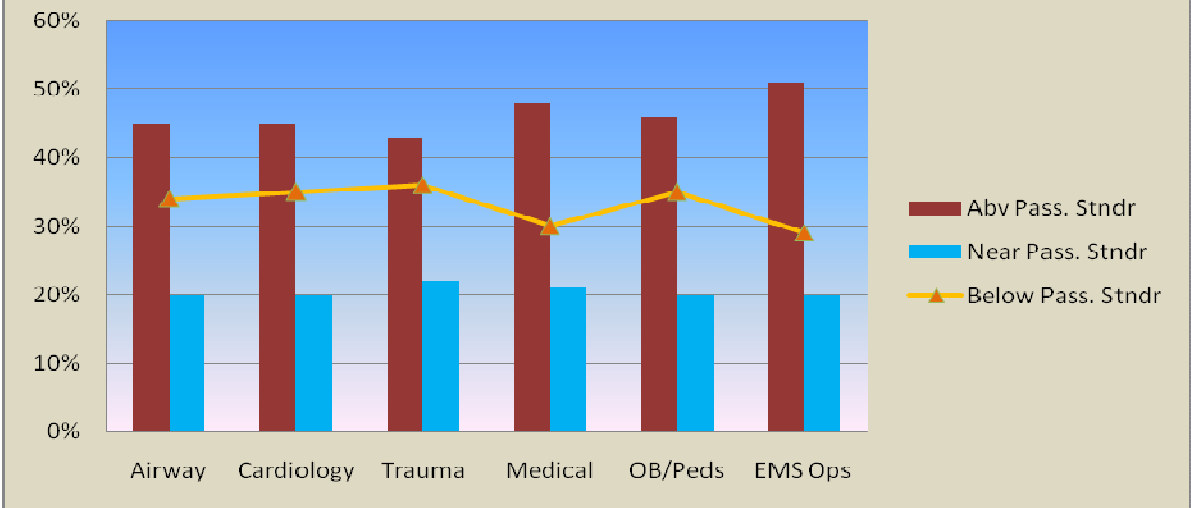
State Topic Area Performance Report

All Basic Attempts	Topic	Abv Pass. Stndr	Near Pass, Stndr	Below Pass. Stndr
2006-2008	Airway	45%	20%	34%
	Cardiology	45%	20%	35%
	Trauma	43%	22%	36%
	Medical	48%	21%	30%
	OB/Peds	46%	20%	35%
	EMS Ops	51%	20%	29%

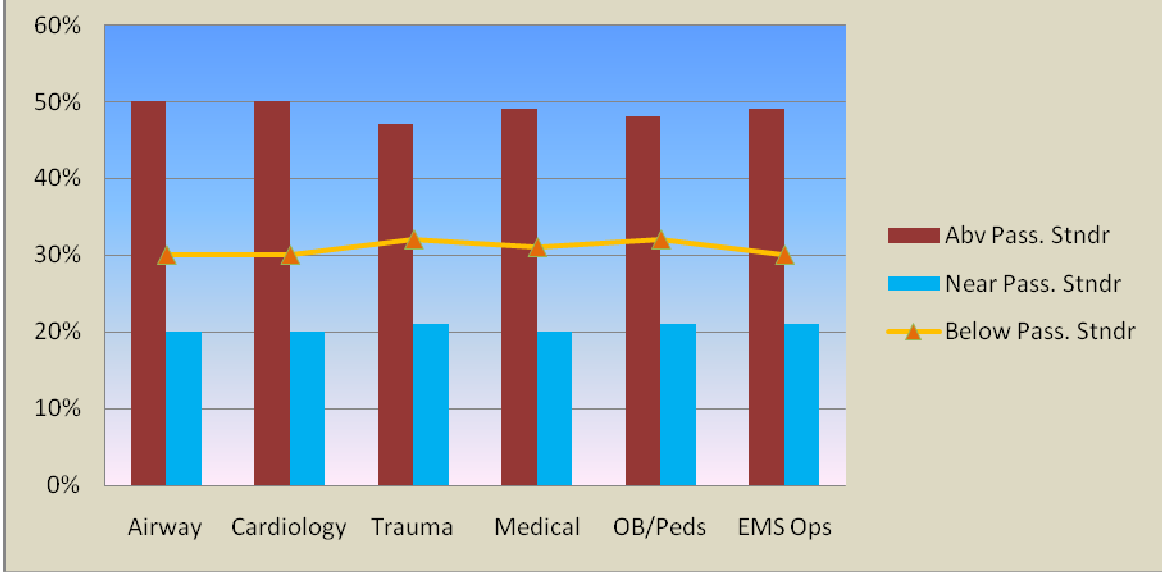
National Topic Area Performance Report

All Basic Attempts	Topic	Abv Pass. Stndr	Near Pass, Stndr	Below Pass. Stndr
2006-2008	Airway	50%	20%	30%
	Cardiology	50%	20%	30%
	Trauma	47%	21%	32%
	Medical	49%	20%	31%
	OB/Peds	48%	21%	32%
	EMS Ops	49%	21%	30%

All Arkansas 2008 EMT Attempts Topic Area Performance



All National 2008 EMT Attempts Topic area Performance



EMT-Intermediate: Arkansas and National Comparative Reports

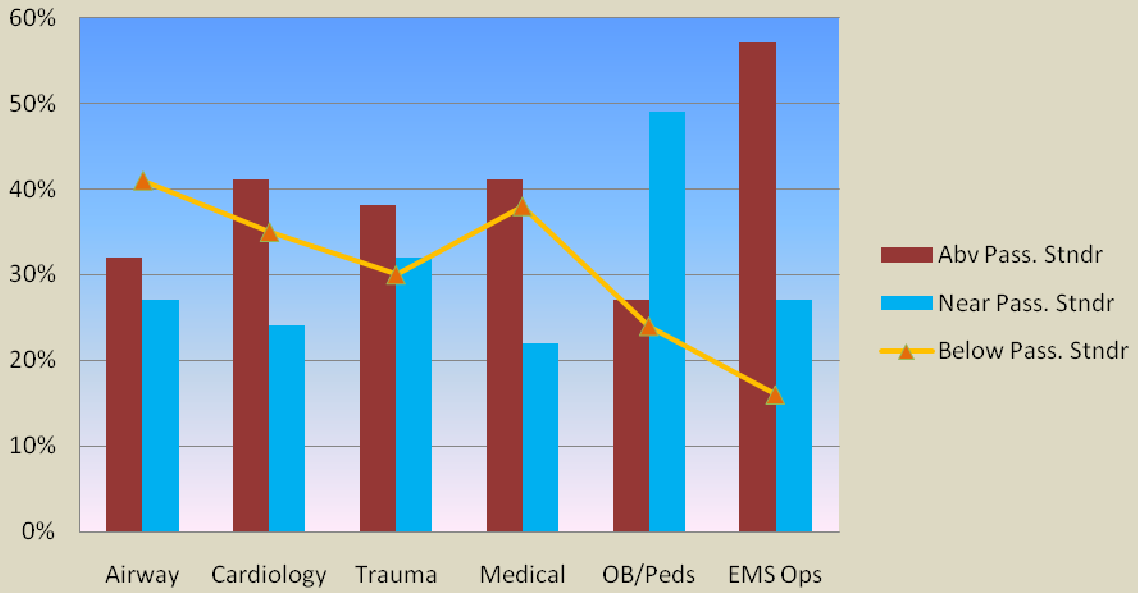
State Topic Area Performance Report

All Int/85 Attempts	Topic	Abv Pass. Stndr	Near Pass, Stndr	Below Pass. Stndr
2006-2008	Airway	32%	27%	41%
	Cardiology	41%	24%	35%
	Trauma	38%	32%	30%
	Medical	41%	22%	38%
	OB/Peds	27%	49%	24%
	EMS Ops	57%	27%	16%

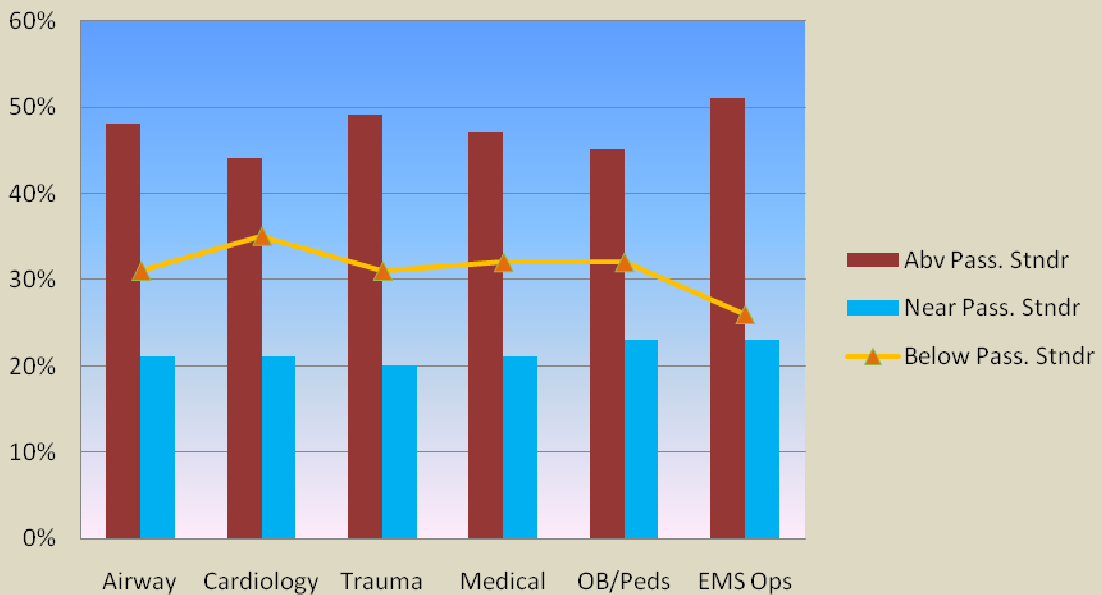
National Topic Area Performance Report

All Int/85 Attempts	Topic	Abv Pass. Stndr	Near Pass, Stndr	Below Pass. Stndr
2006-2008	Airway	48%	21%	31%
	Cardiology	44%	21%	35%
	Trauma	49%	20%	31%
	Medical	47%	21%	32%
	OB/Peds	45%	23%	32%
	EMS Ops	51%	23%	26%

All Arkansas 2008 Int/85 Topic Area Performance Report



All National 2008 Int/85 Topic Area Performance Report



EMT-Paramedic: Arkansas and National Comparative Reports

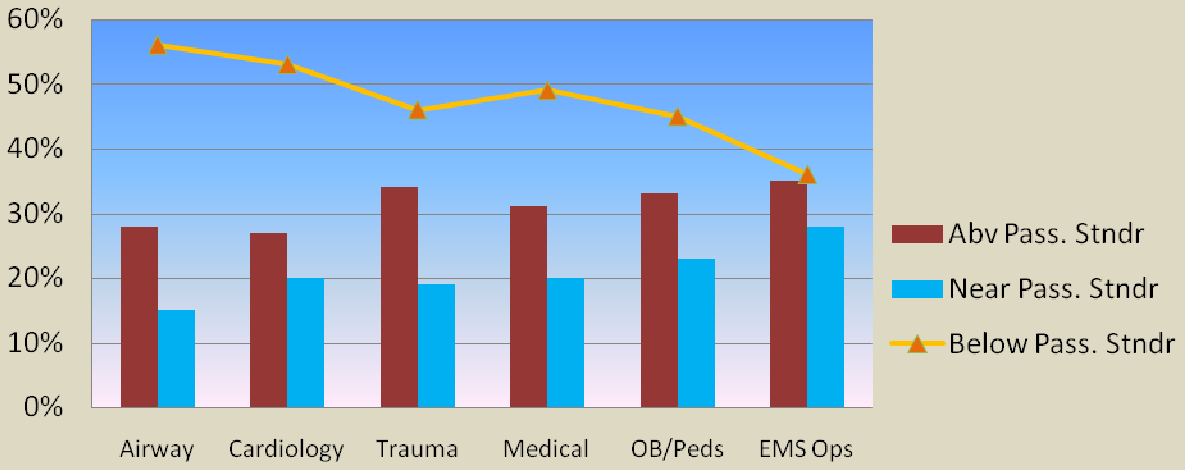
State Topic Area Performance Report

All Int/85 Attempts	Topic	Abv Pass. Stndr	Near Pass, Stndr	Below Pass. Stndr
2006-2008	Airway	32%	27%	41%
	Cardiology	41%	24%	35%
	Trauma	38%	32%	30%
	Medical	41%	22%	38%
	OB/Peds	27%	49%	24%
	EMS Ops	57%	27%	16%

National Topic Area Performance Report

All Int/85 Attempts	Topic	Abv Pass. Stndr	Near Pass, Stndr	Below Pass. Stndr
2006-2008	Airway	48%	21%	31%
	Cardiology	44%	21%	35%
	Trauma	49%	20%	31%
	Medical	47%	21%	32%
	OB/Peds	45%	23%	32%
	EMS Ops	51%	23%	26%

All Arkansas 2008 Paramedic Topic Area Performance Report



All National 2008 Paramedic Topic Area Performance Report

